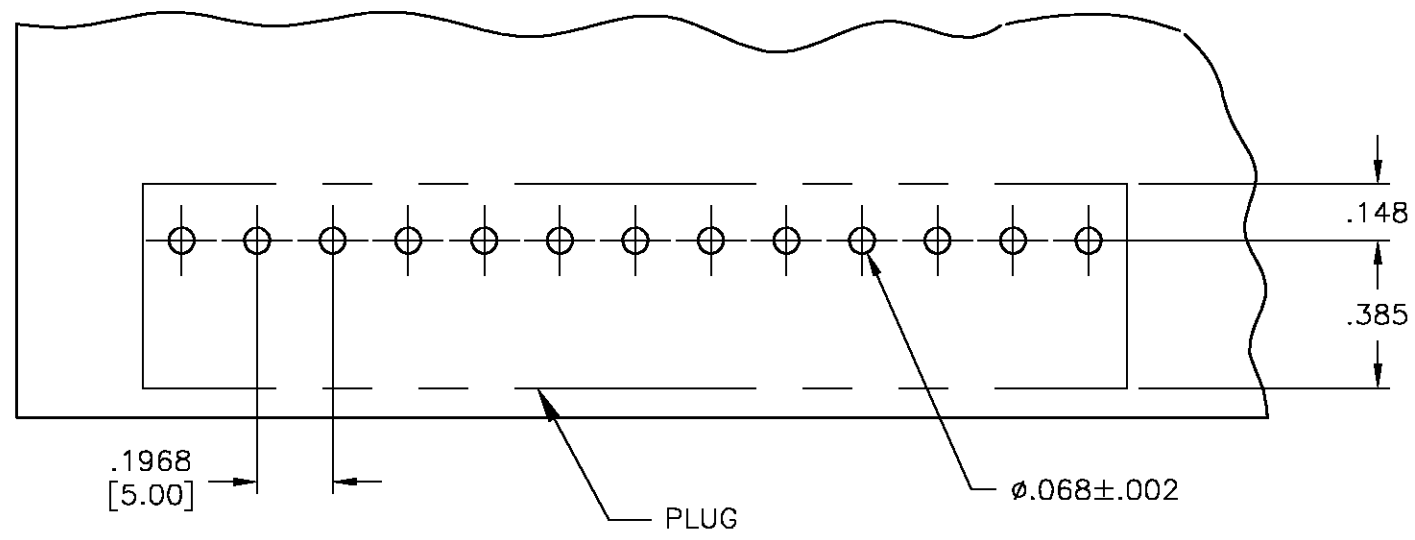


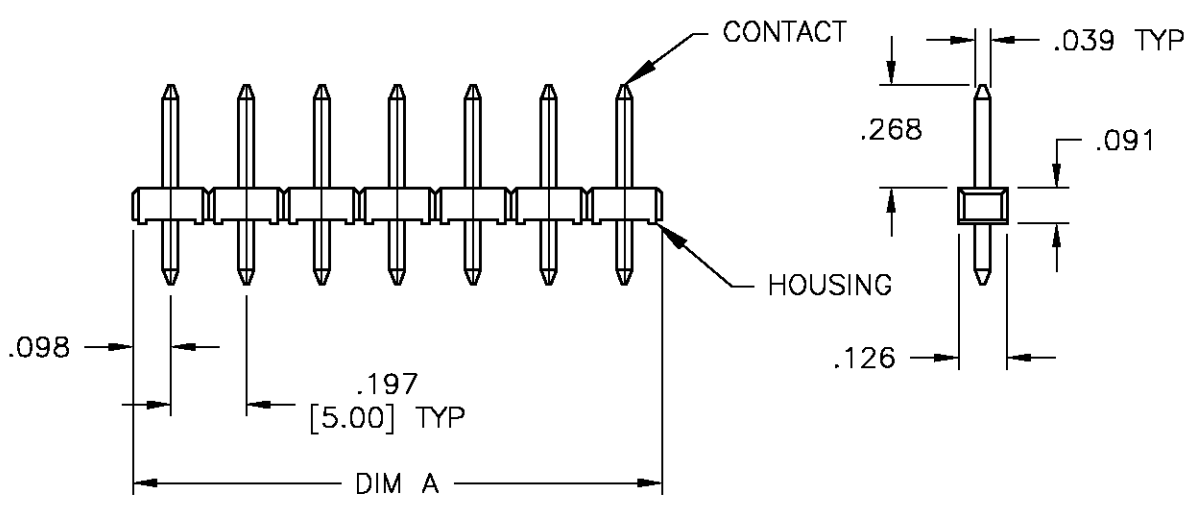
THIS DRAWING IS UNPUBLISHED. RELEASED FOR PUBLICATION
 © COPYRIGHT BY TYCO ELECTRONICS CORPORATION. ALL RIGHTS RESERVED.

LOC	DIST	REVISIONS			
P	LTR	DESCRIPTION	DATE	DWN	APVD
	0	REVISED PER 0G3B-0073-05	2/14/05	SS	CR

NOTES:
 MATERIAL:
 HOUSING: PPS, COLOR: BLACK.
 CONTACT: PHOSPHOR BRONZE, TIN OVER NICKEL PLATED.
 1. ALL DIMENSIONS ARE FOR REFERENCE ONLY.
 2. DIMENSIONS IN [] ARE IN MILLIMETERS.



RECOMMENDED PCB HOLE LAYOUT



DIM A	POSN	TYCO PART NUMBER
120MM (4.7244)	24	2-1776452-4
110MM (4.3307)	22	2-1776452-2
100MM (3.9370)	20	2-1776452-0
90MM (3.5433)	18	1-1776452-8
85MM (3.3464)	17	1-1776452-7
80MM (3.1496)	16	1-1776452-6
75MM (2.9527)	15	1-1776452-5
70MM (2.7559)	14	1-1776452-4
65MM (2.5590)	13	1-1776452-3
60MM (2.3622)	12	1-1776452-2
55MM (2.1654)	11	1-1776452-1
50MM (1.9685)	10	1-1776452-0
45MM (1.7716)	9	1776452-9
40MM (1.5748)	8	1776452-8
35MM (1.3779)	7	1776452-7
30MM (1.1811)	6	1776452-6
25MM (.9842)	5	1776452-5
15MM (.5905)	4	1776452-4
15MM (.5905)	3	1776452-3
10MM (.3937)	2	1776452-2

THIS DRAWING IS A CONTROLLED DOCUMENT.		DWN S SCHLEGEL 2/14/05	Tyco Electronics Corporation Harrisburg, Pa 17105-3608														
DIMENSIONS: INCHES		CHK C RICHARD 2/14/05															
TOLERANCES UNLESS OTHERWISE SPECIFIED:		APVD C RICHARD 2/14/05	NAME HEADER ASSEMBLY 5mm LEAD FREE														
<table border="1"> <tr><td>0 PLC</td><td>± -</td></tr> <tr><td>1 PLC</td><td>± -</td></tr> <tr><td>2 PLC</td><td>± .01</td></tr> <tr><td>3 PLC</td><td>± .005</td></tr> <tr><td>4 PLC</td><td>± .0005</td></tr> <tr><td>ANGLES</td><td>± 1/2</td></tr> </table>		0 PLC	± -	1 PLC	± -	2 PLC	± .01	3 PLC	± .005	4 PLC	± .0005	ANGLES	± 1/2	PRODUCT SPEC -	APPLICATION SPEC -		
0 PLC	± -																
1 PLC	± -																
2 PLC	± .01																
3 PLC	± .005																
4 PLC	± .0005																
ANGLES	± 1/2																
MATERIAL -	FINISH -	WEIGHT -	SIZE A3	CAGE CODE 00779	DRAWING NO C-1776452	RESTRICTED TO -											
CUSTOMER DRAWING			SCALE NTS	SHEET 1 OF 1	REV 0												